



*Join the Hawkins Worldwide DNA Project!*  
[www.familytreedna.com/group-join.aspx?Group=Hawkins&Code=Z47192](http://www.familytreedna.com/group-join.aspx?Group=Hawkins&Code=Z47192)

I hope that all of you in the US had a great Thanksgiving and I want to wish everyone everywhere a Merry Christmas season and a wonderful New Year.

All past newsletters are archived at  
<http://freepages.genealogy.rootsweb.ancestry.com/~hawkinsdnaproject/#Newsletters>.

**Price reduction on testing (FTDNA). View prices at**  
[www.familytreedna.com/group-join.aspx?Group=Hawkins&Code=Z47192](http://www.familytreedna.com/group-join.aspx?Group=Hawkins&Code=Z47192).  
 Family tree DNA is running a special price reduction through December 31. If you have been thinking about testing now would be a good time to act. Maybe a good addition to your Christmas list??

**If** you are a male Hawkins descendent of the *Welcome* passenger family of Jeffery and Dorothy (Mattock) Hawkins to the US in 1682, see Family Group-04, page 6, for an additional reduction in the testing cost.

Articles	Page
FTDNA Special Xmas Prices	1
Using Y-test & Family Finder	1
Ancestors map	2
<i>Genealogy Gems</i>	2
WeRelate.org	3
Hawkins Family Group-01	4
Hawkins Family Group-02	5
Hawkins Family Group-03	5
Hawkins Family Group-04	6
Hawkins Family Group-05	7

I sometimes need a go-to person for help with DNA questions relating to our family history. Are one of you professionally active in the science of DNA that would like to help with this?

The question has come up in our Y-Project as to why matching cousins many times do not show a relationship when they also do the Family Finder test. Following is an explanation from Family Tree DNA.

**What is the probability that my relative and I share enough DNA for Family Finder to detect?**

1. If your relationship is within recent generations (2<sup>nd</sup> cousins or more recent relatives), Family Finder is almost sure to detect your relationship. Testing will also detect many 3<sup>rd</sup> cousins and about half of your 4<sup>th</sup> cousins. It will detect a small percentage of 5<sup>th</sup> and more distant cousins.

**Chances of finding a match:**

Relationship	Match Probability
2 <sup>nd</sup> cousins or closer	> 99%
3 <sup>rd</sup> cousin	> 90%
4 <sup>th</sup> cousin	> 50%
5 <sup>th</sup> cousin	> 10%
6 <sup>th</sup> cousin and more distant	Remote (typically less than 2%)

2. For example, if you have 100 of your 3<sup>rd</sup> cousins test, Family Finder will detect about 90 of them as your 3<sup>rd</sup> cousins. It will not detect the other 10.
3. Family Finder only detects a small percentage of 5<sup>th</sup> cousins and relatives that are more distant. However, the number of such cousins in the population increases exponentially with each generation. This means that if 1,000 of your distant cousins test, you can expect to see a few of them in the *SPECULATIVE RELATIVE* category.
4. For genealogists, it is best to use Family Finder to prove recent relationships (1 to 5 generations). However, after testing, you may discover distant cousins.

Following is a copy of the Hawkins - Member Distribution Map that I can pull up as the Project Administrator. I note that many of the participants have not listed their most distant known ancestors. You can do this at your FTDNA personal home page, and going to MY ACCOUNT \ MOST DISTANT ANCESTORS. Please enter this information.



### *Genealogy Gems*: News from the Fort Wayne Library, No. 105, November 30, 2012

Last month's column mentioned color cast problems that can occur with color photographs and mentioned some of the tools in the Adobe Photoshop and Elements software package that may help counteract them. Remember that fixing problems with photographs often will require the use of more than one tool. Unfortunately, there is not one magic button that says "fix all."

When working with color problems in photographs, it is helpful to have a general knowledge of the color wheel. Usually when there is a color cast problem, the fix is to add color from the opposite side of the color wheel. So if the photo is too red, adding green probably will help. If it is too blue, it may look better with yellow added, and so on.

One way to correct color cast in a photograph is to use the Variations tool. The Variations tool may be found in different places on the screen in different Adobe packages and versions. In Adobe Photoshop (included with Creative Suite), go to Image>Adjustments>Variations. In Adobe Elements, go to Enhance>Adjust Color>Color Variations. Regardless of the path to find Variations (or Color Variations) in the different Adobe products, this is the same tool and produces the same effects.

To use the Variations tool, open the problem photograph within Adobe, then open the Variations tool. Within the dialog box that appears, again there is a difference in verbiage, depending on which Adobe product is being used. In Photoshop, the terms Original, Current Pick, More Red, More Blue (additional colors) and Lighter and Darker will appear, each with a thumbnail of the photograph. In Adobe Elements, the terms below the thumbnails of the photo will be Before, After, Increase Blue, Increase Red (additional colors), Decrease Blue, Decrease Red (additional colors) and Darken and Lighten.

Both Photoshop and Adobe Elements have the choices Midtone/Highlight/Shadows/Saturation and a slide bar to adjust the color intensity. Before beginning to correct the photo's color cast, move the slide bar completely to the right and notice how the thumbnail changes to almost primary colors. This exercise demonstrates how intense the colors in the photograph can be. Then move the slide bar back to its original position. Now, make sure that the Midtone check box is checked.

The photograph I like to use as an example has a too-red cast to it, so I begin to correct it by clicking on the thumbnail that says Increase Green or More Green, depending on my Adobe product. When I do this, the thumbnail that says Current Pick or After changes. If the altered photograph still looks too red, I can click again to balance it with green. It is important to look at the altered photograph itself – outside of the Variations tool – after the first click; the thumbnails within the tool really are too small to show the changes clearly. Once the too-red cast is no longer apparent in the photo, the use of the color thumbnail buttons in the Variations tool is complete.

At this point, it may be desirable to darken or lighten the photograph with the Variations tool, or you may choose another method.

In my example photograph, increasing green balanced the color and caused the red cast to lessen. However, the little girl (me) is wearing a leather jacket that I know was red although it still appears in the photo to be magenta. So another tool will be used to fix this problem – the Hue and Saturation tool.

Next month: Using the Hue and Saturation Tool.

\*\*\*\*\*

Quick-Tip of the Month for Preservation--Preserve Historical Ephemera at WeRelate.org, a "Virtual Filing Cabinet" by Dawne Slater-Putt, CG(sm)\*

As genealogists, we often have a natural interest in history and a tendency to save or collect paper ephemera, including items that do not specifically pertain to our ancestors. These documents and photographs might have historical significance for organizations to which we belong, or for our local communities. We can scan and upload our genealogy documents and photographs and link them to our ancestors. But what can we do with those other miscellaneous items we have saved like school play programs, theater tickets and flyers from neighborhood historic home tours? One answer is to upload them to the WeRelate website at <http://www.werelate.org>.

WeRelate is a free wiki site that bills itself as "different than most family tree websites." It promotes a shared approach to genealogy through which anyone can create a page for a person, a family unit or a place, and anyone can change data on those pages and add more information to them. Some genealogists may squirm at the idea of anyone being able to make changes to their people and family pages. But where this collaboration shines is for the genealogist/pack rat with the piles of historical ephemera mentioned above. WeRelate.org can be used as a virtual filing cabinet for those local history documents by scanning them and uploading them to the site, linking them to a locality page. Anyone can be a contributor by creating a username and password. There are tutorials on the site, and uploading and linking images takes just a little practice to master.

The Genealogy Center becomes a home for hundreds of individual clippings, flyers, programs and photographs annually. Many of these come to us tucked inside high school and college yearbooks that are donated to the collection. Over the years, this has caused a dilemma. The Genealogy Center does not maintain vertical files, and it is not cost-efficient to bind a single graduation program into a book and give it a call number. Yet these items are pieces of history, usually include names – sometimes many names – and are too valuable to discard outright.

The solution has been to scan and upload each item to WeRelate and link it to a locality page, then to try to find a museum or historical society in that area to become its forever home. Church dedication programs, sports team photographs, high school theater tickets, community event flyers and many other pieces of ephemera of all types have been handled this way.

Treat yourself to a visit to WeRelate.org soon. If you have explored the site previously and have limited yourself to searching by name, try looking at the pages for your ancestor's town, county or state of residence. You may find some treasures in the gallery of images at the bottom of the page.

\*“CG” & “Certified Genealogist” are service marks of the Board for Certification of Genealogists, and are used by authorized associates following periodic, peer-reviewed competency evaluations.

If your Family Group does not have an Assistant Administrator, it is not being provided the oversight that is needed. It is just no longer possible for me to provide the attention to the individual family groups as I have tried to in the past. It is not necessary that the Group Administrator be a testing participant or have more than basic DNA knowledge, just a keen interest in advancing the knowledge within their family group. The family Groups that we have identified that do not have a leader are 03, 06, 09, 15, 16, 18, 19, 20, 21, and 22.

**Volunteers please!**

-----\*\*\*\_\*\*\*-----

Input from our Hawkins Family Groups. The family pages are found at  
[http://freepages.genealogy.rootsweb.ancestry.com/~hawkinsdnaproject/tree\\_g-1.html](http://freepages.genealogy.rootsweb.ancestry.com/~hawkinsdnaproject/tree_g-1.html).

**Hawkins Family Group-01** (Group Administrator is Marsha Moses, [mosesm@earthlink.net](mailto:mosesm@earthlink.net))  
[http://freepages.genealogy.rootsweb.ancestry.com/~hawkinsdnaproject/tree\\_g-1.html#Group-01](http://freepages.genealogy.rootsweb.ancestry.com/~hawkinsdnaproject/tree_g-1.html#Group-01)

**John #25399 - Please advise your latest email. Phil**



< Malvin Franklin Glass Sr., Malvin Franklin Glass III (in middle), and Malvin Franklin Glass Jr., circa 1946 Caldwell, NJ.

Malvin Franklin Glass Jr, and Lawrence Giles Glass, Columbus GA 2008. >

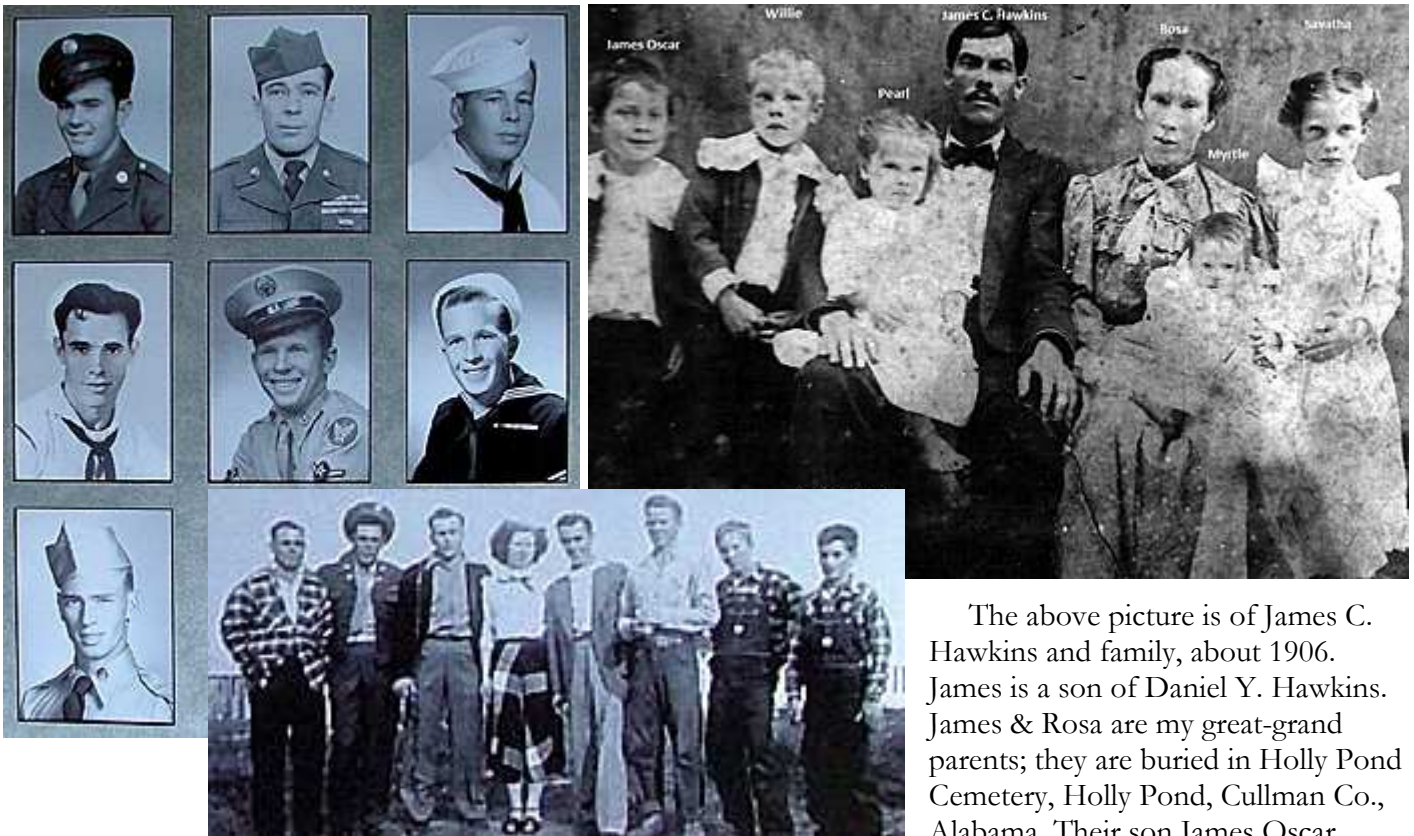


This Glass family has a Hawkins of Hawkins Family Group-01 as a direct line male ancestor, and are searching for that connection.

**Hawkins Family Group-02** (Group Administrator is Bob Hawkins, [bohawk507@sbcglobal.net](mailto:bohawk507@sbcglobal.net))  
([http://freepages.genealogy.rootsweb.ancestry.com/~hawkinsdnaproject/tree\\_g-1.html#Group-02](http://freepages.genealogy.rootsweb.ancestry.com/~hawkinsdnaproject/tree_g-1.html#Group-02))

I have been writing this monthly article for almost 3 years now and have pretty much exhausted all of the materials on Group 2 that I have accumulated over the years. Group 2 is a small group with roughly a half dozen participants. I am appealing to other members in Group 2 to submit any photo's, records or any other items that we can include in future articles. We also need to take advantage of the sales that FT-DNA has been having including the one going on now until the end of the year. Please encourage anybody with the Hawkins surname to be tested. An increased pool of participants only helps us to further prove fact from fiction. We have to many gaps in our group and we need to fill them in.

**Hawkins Family Group-03** (Group Administrator is needed).  
[http://freepages.genealogy.rootsweb.ancestry.com/~hawkinsdnaproject/tree\\_g-1.html#Group-03](http://freepages.genealogy.rootsweb.ancestry.com/~hawkinsdnaproject/tree_g-1.html#Group-03)



The above picture is of James C. Hawkins and family, about 1906. James is a son of Daniel Y. Hawkins. James & Rosa are my great-grand parents; they are buried in Holly Pond Cemetery, Holly Pond, Cullman Co., Alabama. Their son James Oscar

Hawkins is my grandfather, he also is buried in Holly Pond Cemetery, next to his mom and dad.

The second picture is made up of the children of James Oscar Hawkins. The group at the bottom right is Cecil, JC, Grady, Ella Mae, Buddy, Junior, Billy, and Bobby. Grady Hawkins is my father; he is buried in New Canaan Cemetery, Arab, Cullman Co., Alabama. Randal Hawkins

**Hawkins Family Group-04** (My, your editor's, family group, [phil\\_hawkins@sbcglobal.net](mailto:phil_hawkins@sbcglobal.net)): Earliest known common ancestors are Jeffery and Dorothy (Mattock) Hawkins, emigrating from Wilts, England in 1682 to Bucks Co., PA.  
([http://freepages.genealogy.rootsweb.ancestry.com/~hawkinsdnaproject/tree\\_g-1.html#Group-04](http://freepages.genealogy.rootsweb.ancestry.com/~hawkinsdnaproject/tree_g-1.html#Group-04))

Participants in our Family Group-04 are requested to test, if funds allow, at the Y-67 level as a minimum, and **if possible at the Y-111 level**. It is appropriate for cousins in the same generation to contribute to testing one of the males that **will** be representative of all.

**Concerning the Special Price Reductions by Family Tree DNA, as mentioned on page 1, if you are a male Hawkins descendent of the *Welcome* 1682 passenger Jeffrey Hawkins, you may receive an additional \$25 for testing at the Y-67 or Y-111 level. This bonus is from funds provided by our Family Group-04. Contact me for additional information, [phil\\_hawkins@sbcglobal.net](mailto:phil_hawkins@sbcglobal.net).**

I have made some changes to the testing results in our family group table at [http://freepages.genealogy.rootsweb.ancestry.com/~hawkinsdnaproject/tree\\_g-1.html#Group-04](http://freepages.genealogy.rootsweb.ancestry.com/~hawkinsdnaproject/tree_g-1.html#Group-04).

Using the master tree, I have added Henry numbers in the table to the extent possible, and have rearranged the participants, reordering them according to the sons of James and Martha Hollowell with a blank row between each son. The Henry numbers start with 1 Jeffrey, 9 his son James, and 1 his grandson, James, that married Martha Hollowell. Most of us start with 191, and then numbers are added for each generation, according to the descendent order. Our Henry # 191131 would identify the branch Jeffrey > James > James > John > Amos > Henry. Please check your number and make sure that it is correct.

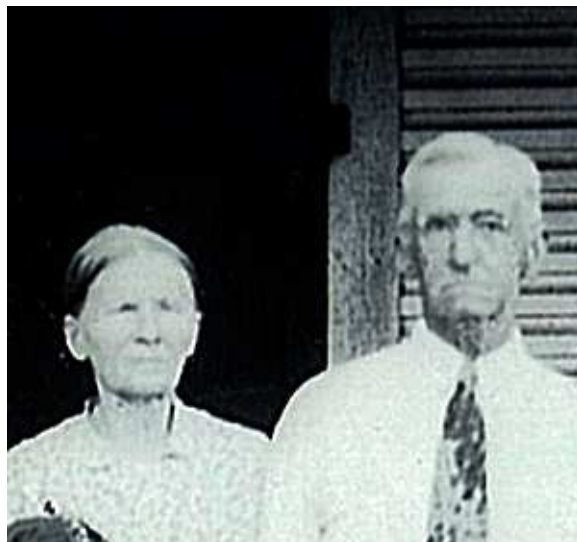
Also, I have done some coloring, identifying the variances, hopefully to help with analysis.

\*\*\*\*\*

The following pictures were submitted by John Belden Hawkins.

James Amos Hawkins, 1851-1939, (James Andrew, Jonathan, Isaac, James, James, Jeffrey) is pictured right with his wife Sarah (Gallman) in 1932. Next is his son Sumpter Moore, 1886-? and wife Beulah (Wright).

In the next grouping is Sumpter's son James Franklin and his new wife Mitty, James Franklin again, about 1942, his son John Belden in 1969, and again in 2011.





The couples, from left to right, are the siblings “Mitty” (Lucia Leigh) and James Franklin Hawkins, Marion and “Duke”, Betty Anne and Larry, Jayne and Wright, Edith and Bob.

**Hawkins Family Group-05** (Group Administrator is Jeanne Bornefeld, [jeanne.bornefeld@yahoo.com](mailto:jeanne.bornefeld@yahoo.com))  
[http://freepages.genealogy.rootsweb.ancestry.com/~hawkinsdnaproject/tree\\_g-1.html#Group-05](http://freepages.genealogy.rootsweb.ancestry.com/~hawkinsdnaproject/tree_g-1.html#Group-05)



Phyllis Hamman submitted these pictures of her Hawkins line. Her participant in the project is # 15245. The pictures are of James William Hawkins, 1890-1969, his wife Eula, and their daughter Colleen. Next are Sam & Phyllis in 1989.

- 1 Stone Jackson Hawkins b: 1863 in Marion Co., AL d: in Dyer Co., TN  
 . +Mary Jane Westbrook d: in Dyer Co., TN
- ..... 2 James William Green Hawkins b: 1890 in Marion Co., AL d: March 1969 in MO  
 ..... +Eula Belle Durham m: 1922 in ?Hickman?,TN
- ..... 3 Colleen Hawkins b: 06 July 1923 in Dyersburg, TN d: 22 August 1946 in Memphis, TN  
 ..... +Lemuel Eldridge Proffitt b: 06 May 1915 in Roane Co., TN m: 14 November 1945 in Catoosa Co., GA d: 19 December 1963 in Sandusky, OH
- ..... 4 Phyllis Hope Proffitt  
 ..... +Sameul Earl Hamman

\*\*\* \*\*

If you maintain a web site with Hawkins information, please add a link to our Hawkins DNA Project. If you maintain a website that relates to any of our Hawkins DNA lines, please advise, and I'll list a link for it on our site.

\*\*\* If you know someone that would like to be on the Hawkins project information mailing list, please send me their name and email and I'll add them. Anyone that desires not to be on the list should request removal.

\*\*\* Please advise us of any planned Hawkins reunions. We would like to list them indicating the patriarch, place, dates, and any other special information. Consider collecting donations to have some of the cousins in your group tested. Maybe you have the perfect paper records, but the mutations that occur in the separate lines need to be identified now for succeeding generations (and just maybe, your paper records are not as solid as you assume).

\*\*\*



If you have tested with someone other than Family Tree DNA please contact me about also participating in our Hawkins Project.

\*\*\***Reprints:** Permission to reprint articles from the *Hawkins DNA Newsletter* is granted unless specifically stated otherwise, provided the reprint is used for non-commercial, educational purposes; and the following notice appears at the end of the article: Previously published in the *Hawkins DNA Newsletter* 2012-11\_30 Nov 2012.

Phillip A. Hawkins, Administrator, Hawkins Worldwide DNA Project [No compensation received]

*Hawkins DNA Newsletter* 2012-11\_30 Nov 2012

And

