

# Hopkins Plat Map

## 1890 Volume 2 - East Side of Allegheny City Plate 15

Select Resolution Level and Image Size. Then click on the area of the map you wish to view.

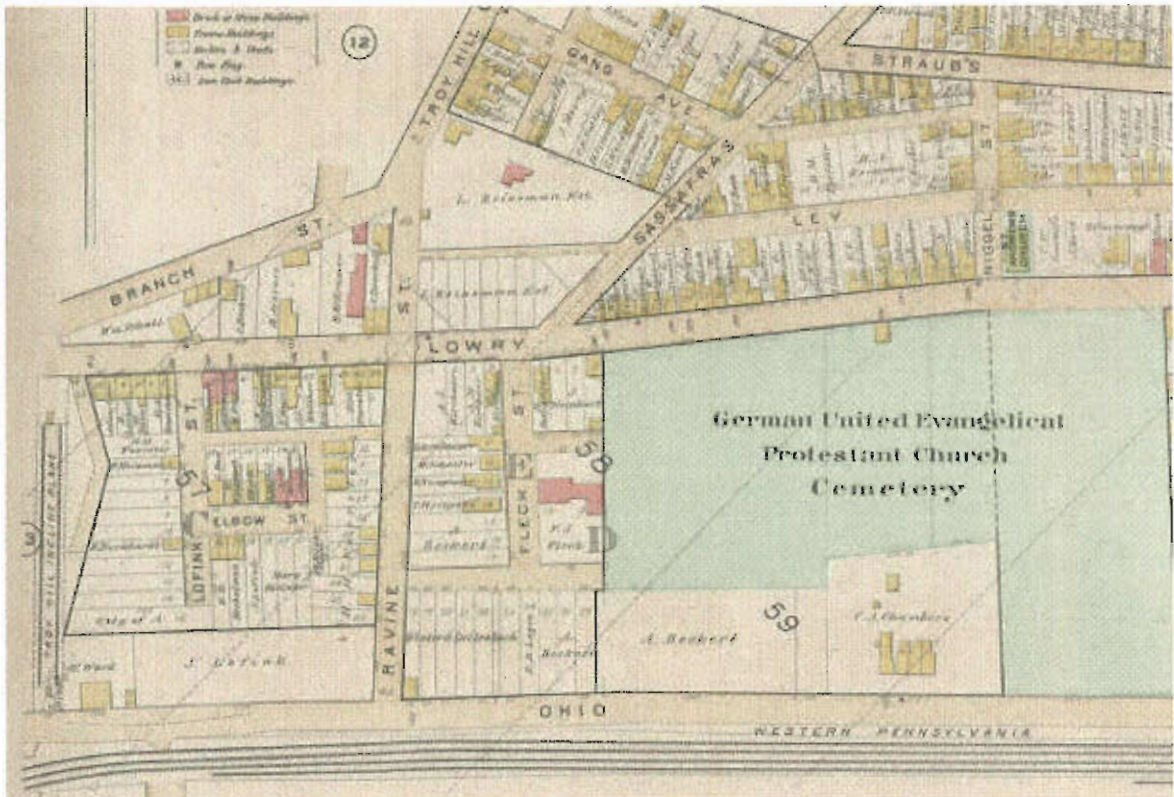
600 x 400 (width x height pixels) 12 (percent zoom)

### Select Resolution Level

- View at 100%
- View at 50%
- View at 25%
- View at 12%
- View Full Map

### Image Size

- 256 x 256
- 600 x 400
- 640 x 480 (width x height pixels)



Return to the main [Index Map for 1890 Volume 2 - East Side of Allegheny City.](#)

Return to the [Main Maps Page](#)

# Hopkins Plat Map

## 1890 Volume 2 - East Side of Allegheny City Plate 15

Select Resolution Level and Image Size. Then click on the area of the map you wish to view.

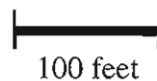
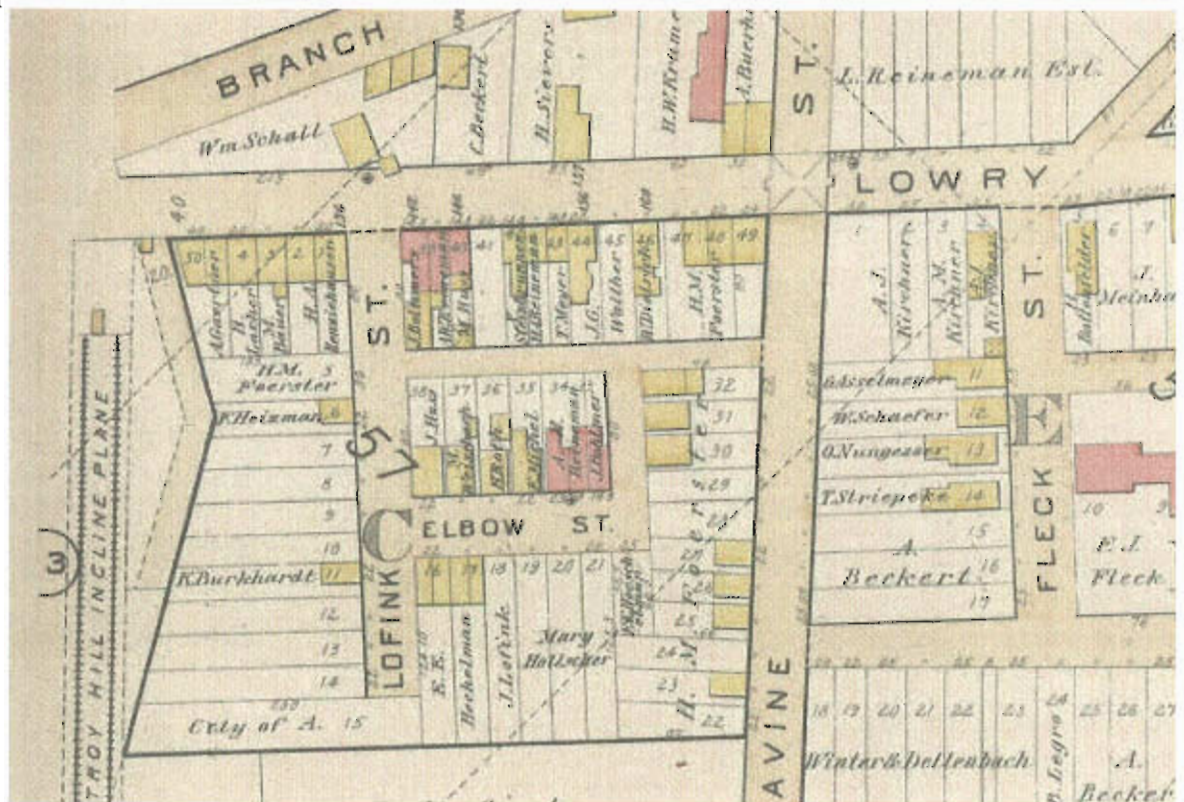
**Select Resolution Level**

600 x 400 (width x height pixels) 25 (percent zoom)

- View at 100%
- View at 50%
- View at 25%
- View at 12%
- View Full Map

**Image Size**

- 256 x 256
- 600 x 400
- 640 x 480 (width x height pixels)



Return to the main [Index Map for 1890 Volume 2 - East Side of Allegheny City.](#)

Return to the [Main Maps Page](#)