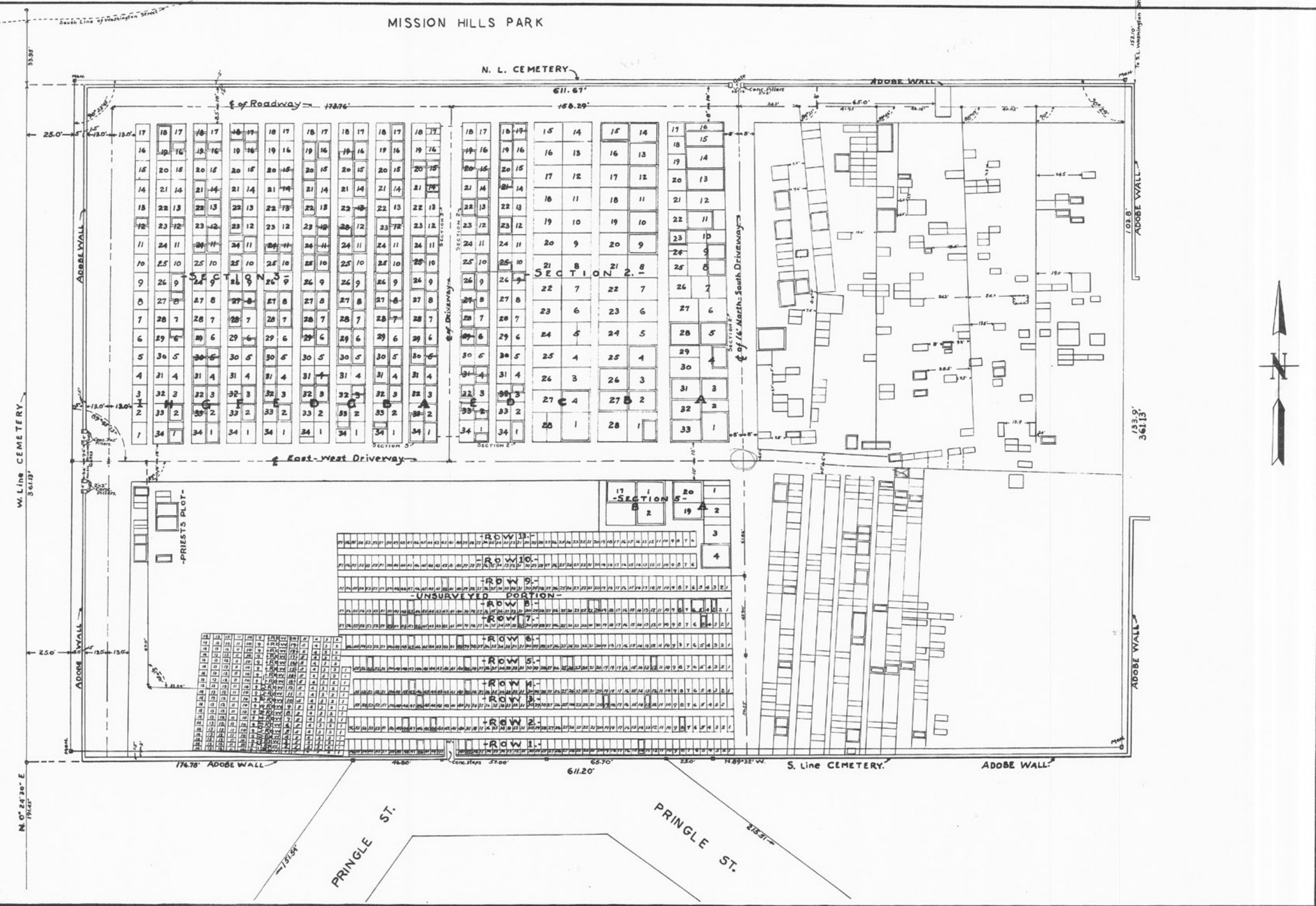


MISSION HILLS PARK

N. L. CEMETERY



MISSION HILLS CEMETERY

DATE: NOV. 1942.  
 DRAWN BY: R.L.R.  
 CHECKED BY: C.F.K.  
 Carey C. Brooll, Supt. of Cemetery.  
 1.8. 156 P.21 - G.141-921 - 6068L.

SCALE 1"=10'  
 SHEET 1 of 10 SHEETS.